



Constituent Group 1

Buildings and Grounds

| | |
|---------------|--------------------|
| John Redemske | Building & Grounds |
| Aline Schwob | Landscape |
| Dennis Brown | Risk Management |

Initial Meeting: 2018-04-02

Follow Up Meeting: TBD

Meeting and Constituent General Notes:

3 most important issues with respect to planning and design as design moves forward

- 1) Budget—low project cost—ease of construction
- 2) Maximize usage of space (adaptable—flexible space use)
- 3) Low Maintenance (materials—initial costs vs operational/life cycle costs)

3 main goals of your group/sub-groups

Building & Grounds

- 1) Create building that is in context and scale with surrounding neighborhood
- 2) Low Maintenance Buildings & Grounds
- 3) Safe Structures & Parking Areas (safe—ADA—circulation—children—general safety)
- 4) Other:
 - a. Infrastructure
 - b.

Landscape

- 1) Maintain beautiful outdoor areas (keep existing? vs creating new ones)
- 2) Any new landscaping to be 'water wise'—deer tolerant?
- 3) Create 'multi-use' areas for use by church AND neighborhood (adaptable—flexible space use)

Risk Management

- 1) Provide a safe environment (safe—ADA—circulation—children—general safety)
- 2) Identify Safety Issues: (safe—ADA—circulation—children—general safety)
 - a. Circulation paths between spaces that are not protected from weather
 - b. North facing main entry to sanctuary and San Juan House
 - c. ADA code issues—general
 - d. Security & outdoor lighting
 - e. Lack of signage
- 3) Create 'multi-use' areas for use by church AND neighborhood (adaptable—flexible space use)



Like MOST about existing campus

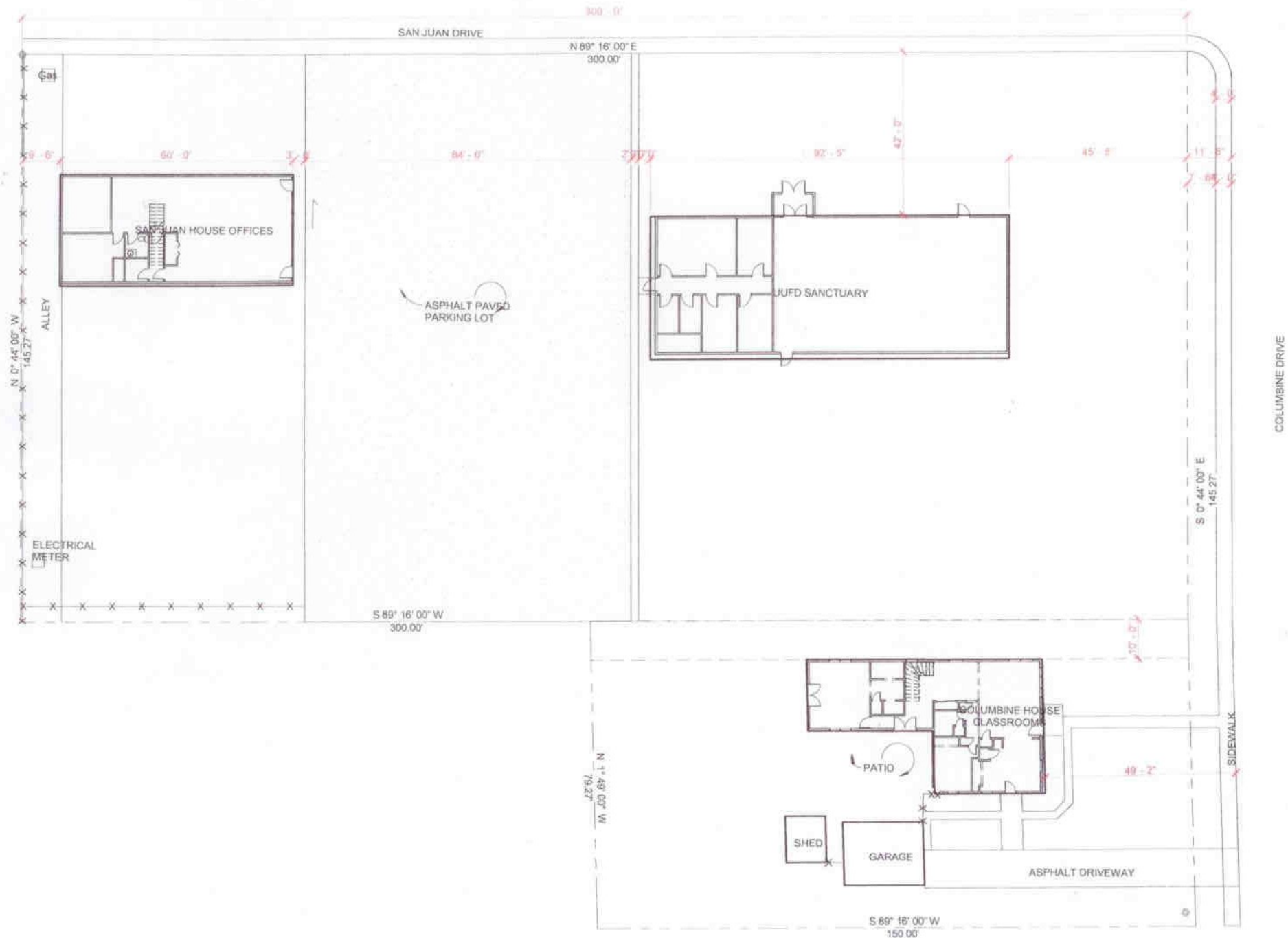
- 1) Sanctuary Space—wood arches, stained glass, intimate feel
- 2) Patio area
- 3) Landscaping

Like LEAST about existing campus

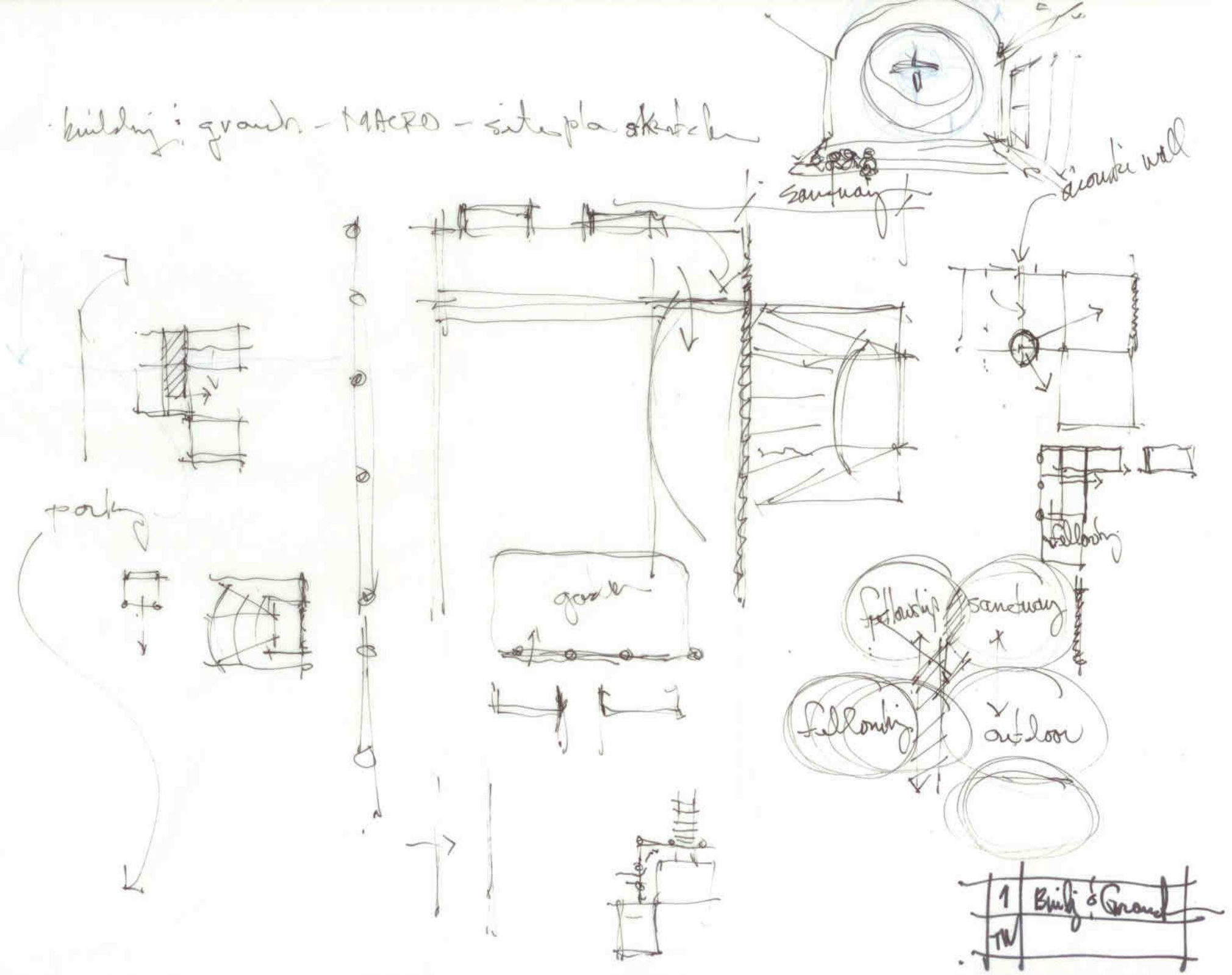
- 1) Crowded Bowman Hall for fellowship time
- 2) Parking lot location
- 3) Circulation in between primary spaces in inclement weather

Bauen Group Recommendations, Conclusions and Findings:

- 1) Recommend: Bowman Function be adjacent to Sanctuary—no parking in between—can be connected by breezeway
- 2) Conclusion: Sanctuary proportions for allowable seating as existing are good—proportions will not be the same as the sanctuary gets changed to accommodate additional seating 250-300 people
- 3) Conclusion: Administration, Community Outreach and Sanctuary Space are spaces that could be separated from the rest of the functions—but will require separate utilities, signage, landscaping upkeep, etc
- 4) Finding: Aesthetics is important—how do the different architectural styles relate to one another?
- 5) Conclusion: It is possible to have a building that is designed in such a way so as to present itself as a group of buildings
- 6) Finding: Breezeways between larger zones, covered and conditioned with the correct dimensions, can 'flex' space

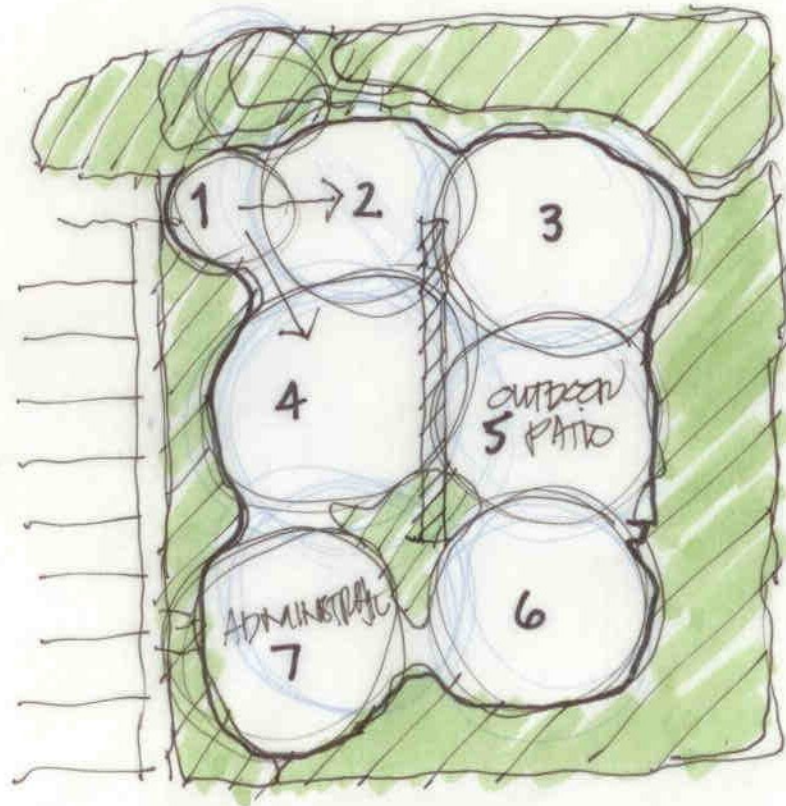


building: ground - MACRO - site plan sketch



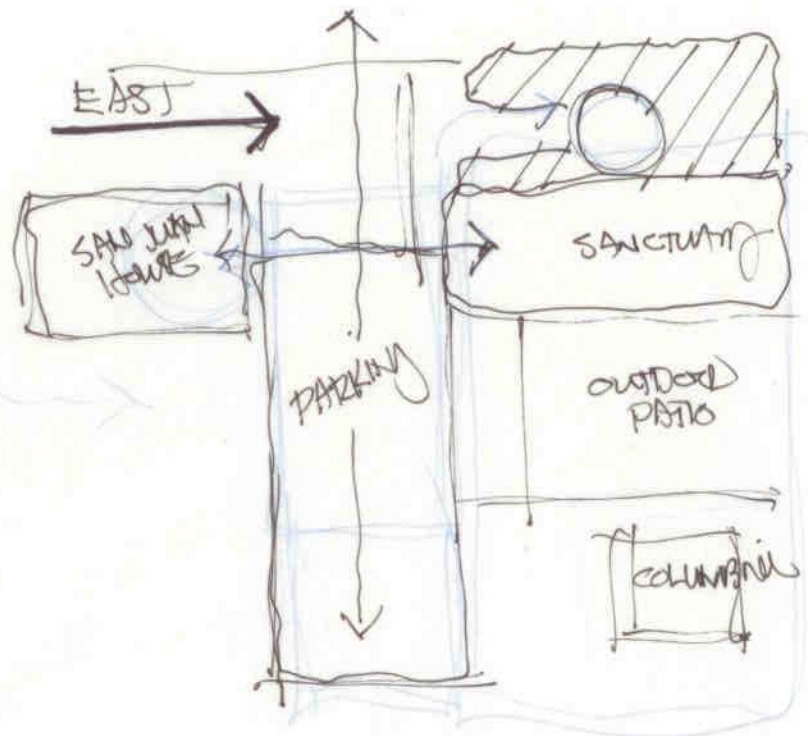
| | |
|----|----------------|
| 1 | Build & Ground |
| TU | |

SAN JUAN DR



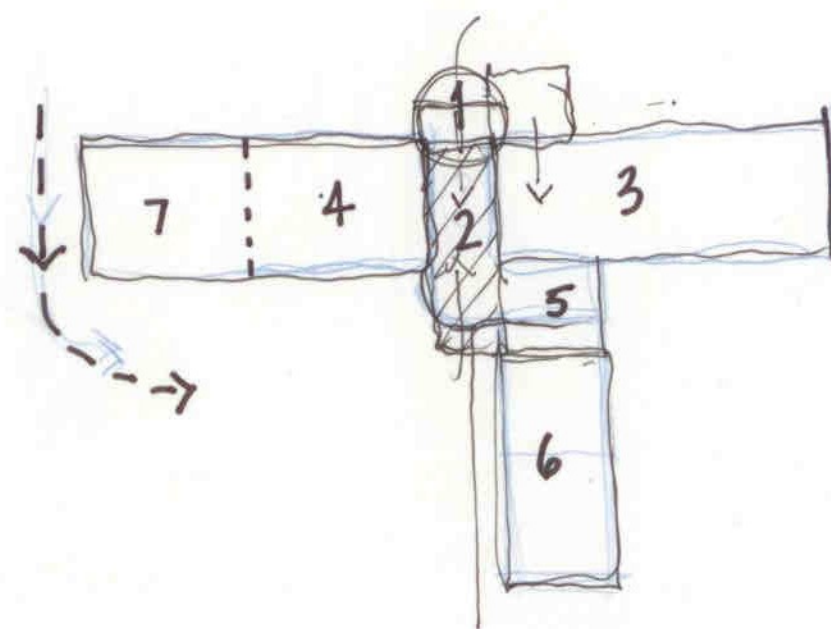
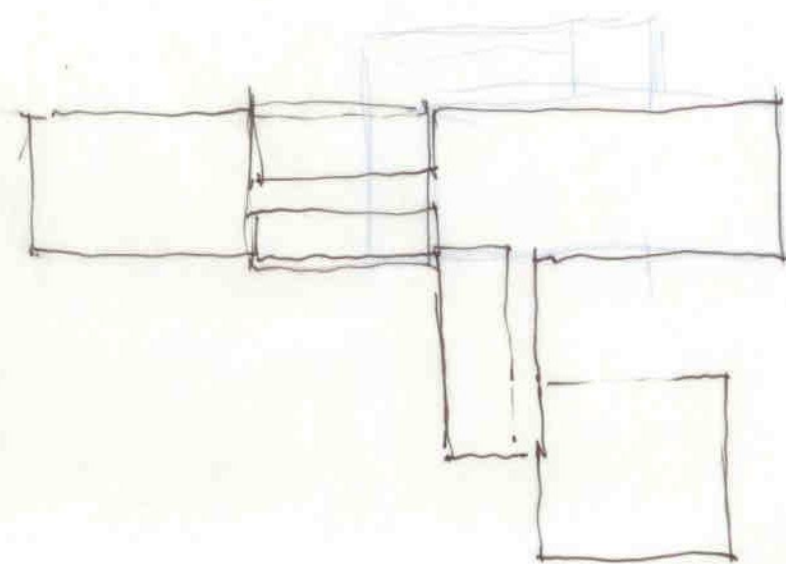
1. ENTRY
2. SOCIAL ZONE #1
3. SANCTUARY
4. SOCIAL ZONE #2
5. OUTDOOR SPACE
6. KIDS - RE

7. ADMINISTRATION

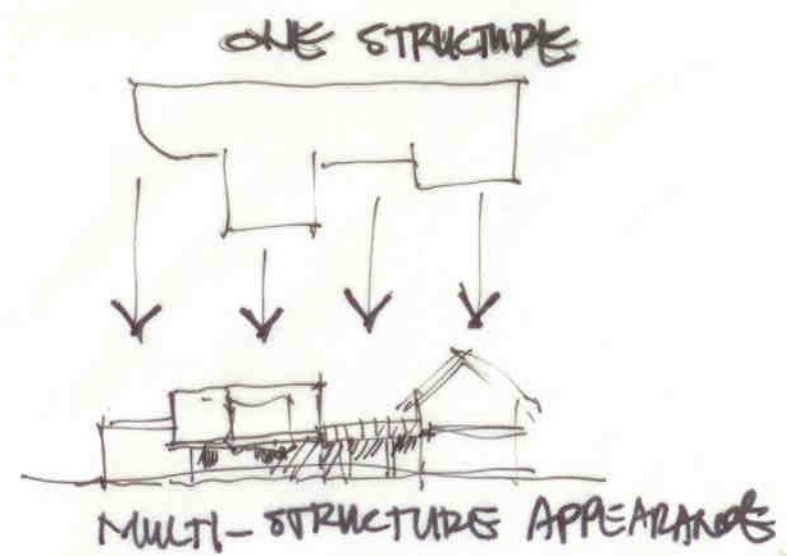


| | |
|----|--------------|
| 3 | Kindergarten |
| TH | |

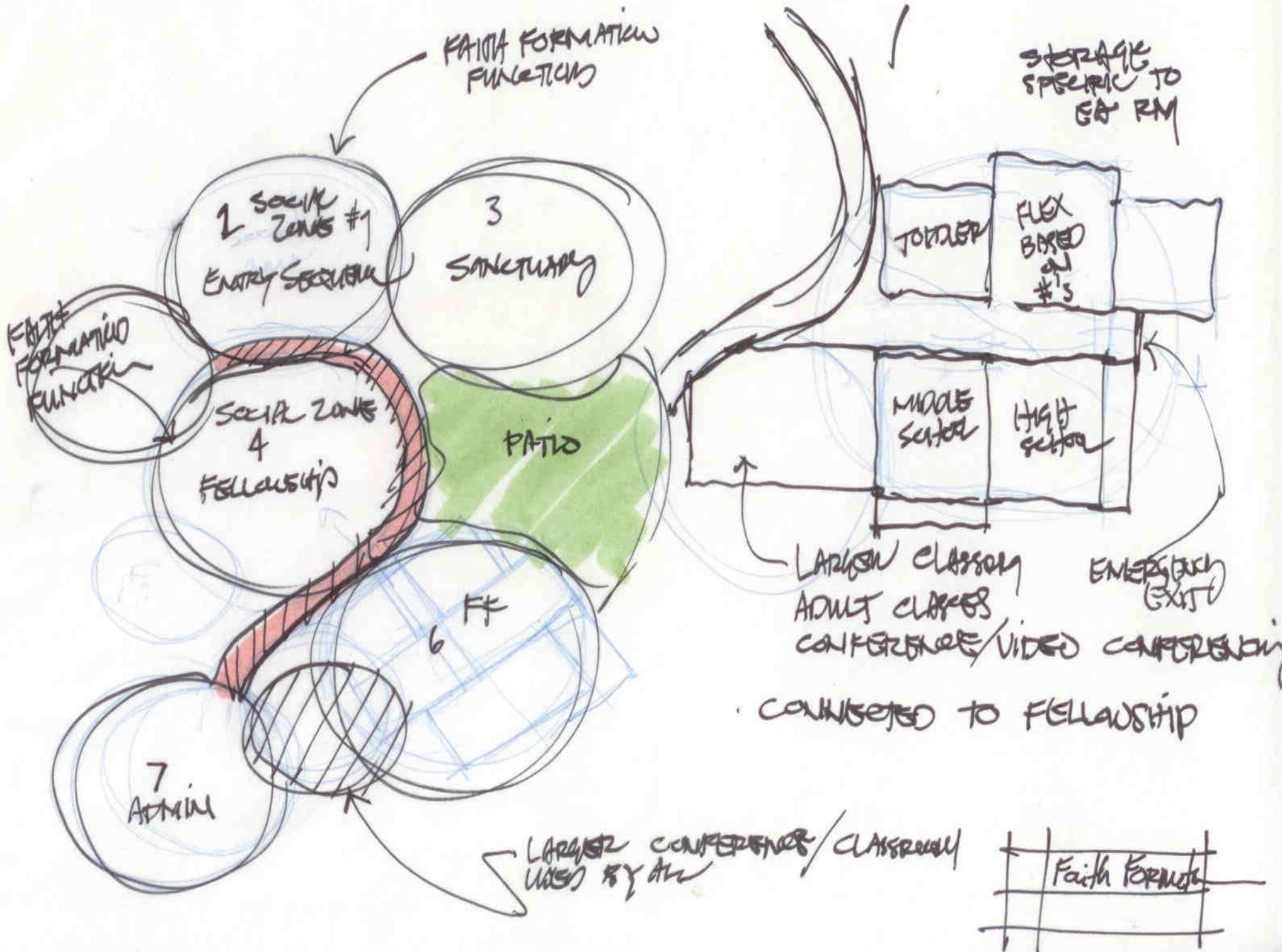
• how to blend architecture styles

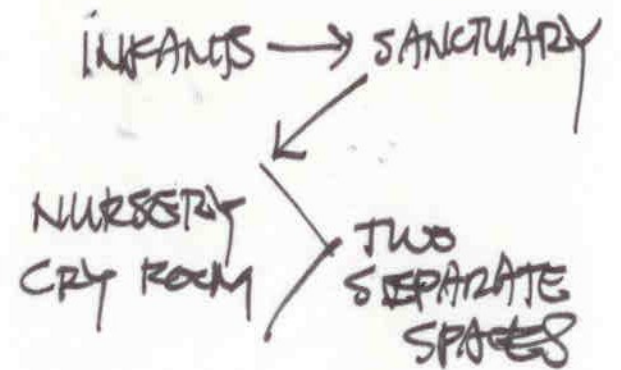
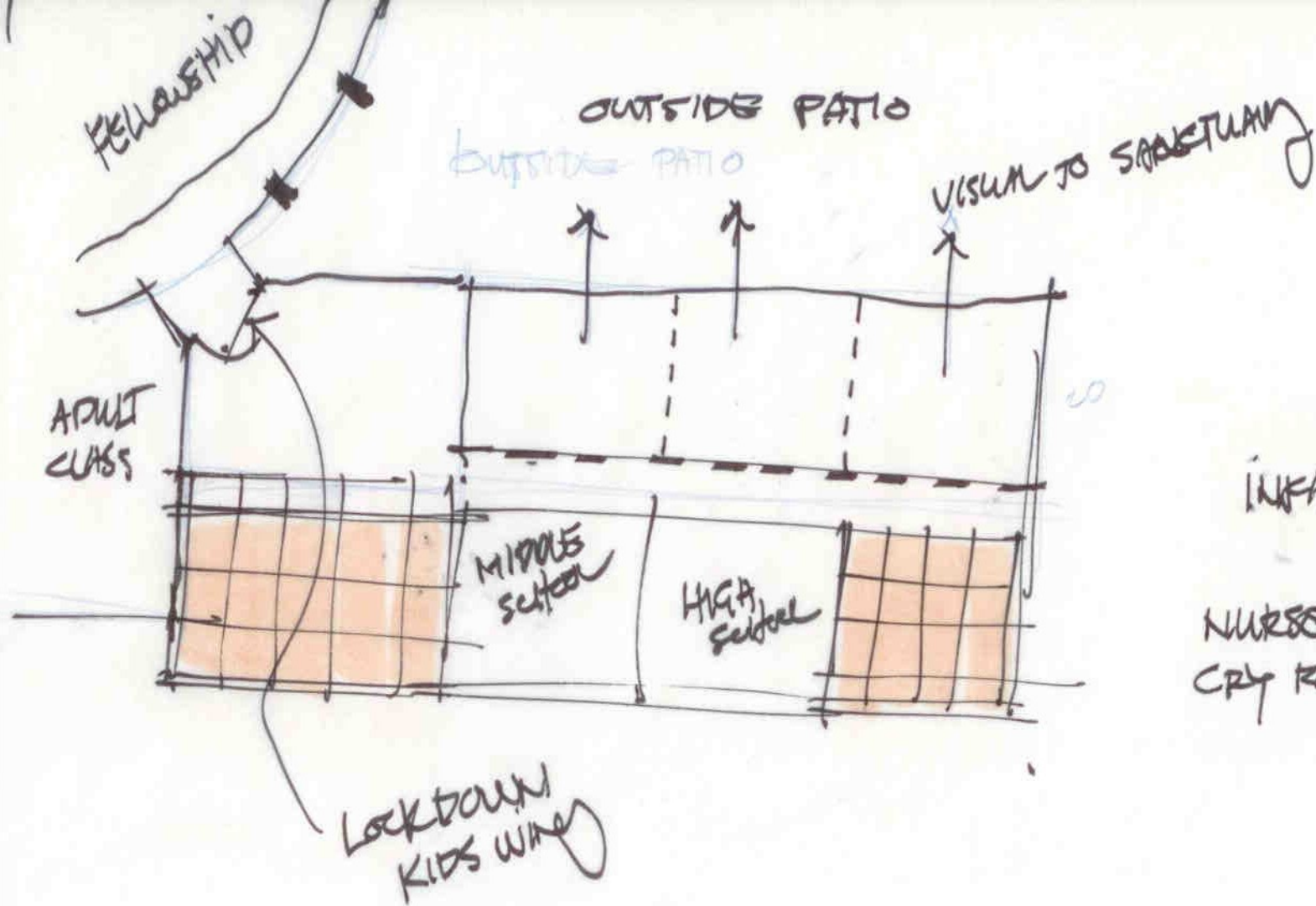


• breezeway can function as flex space w/comp dimension - conditions



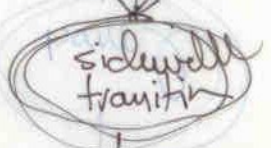
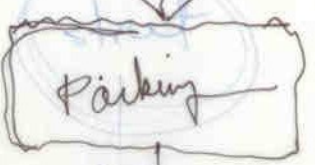
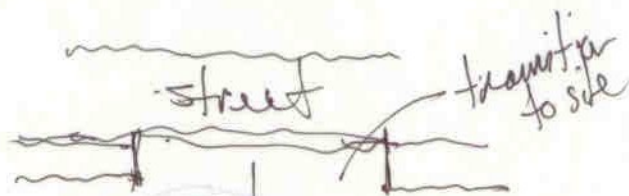
| | |
|---|--------------|
| 4 | Build: Grant |
| | |



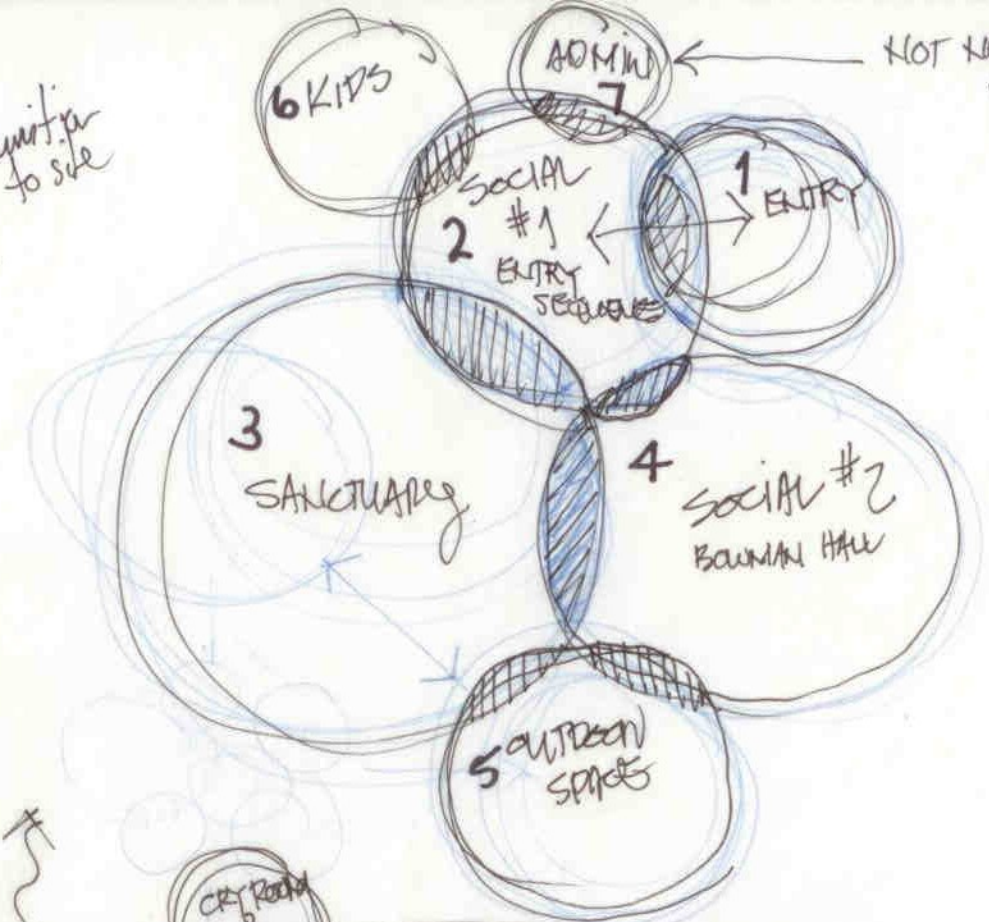
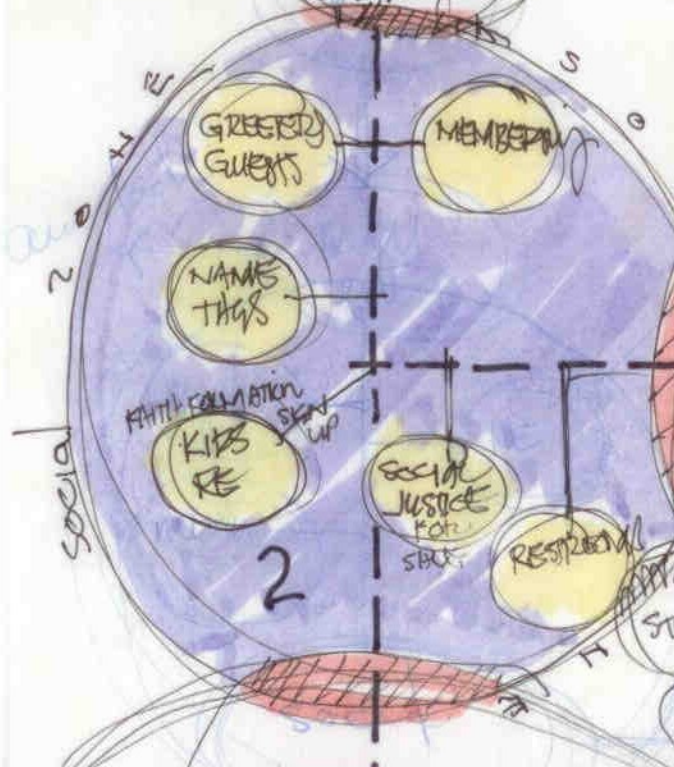


Faith Forum

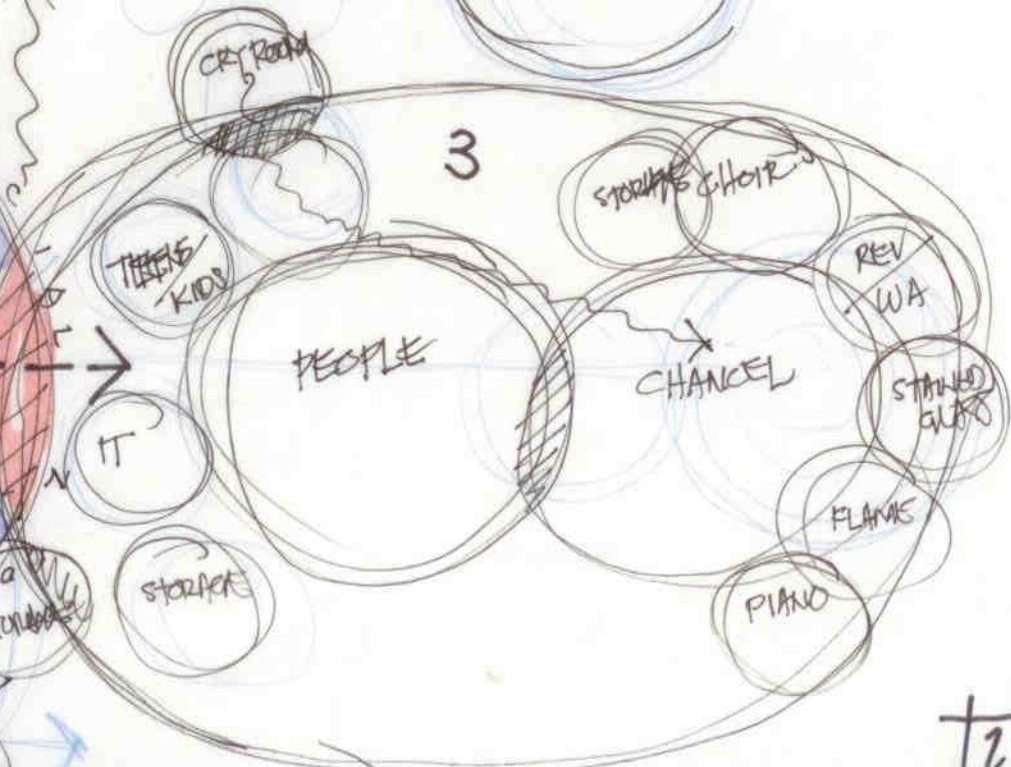
+



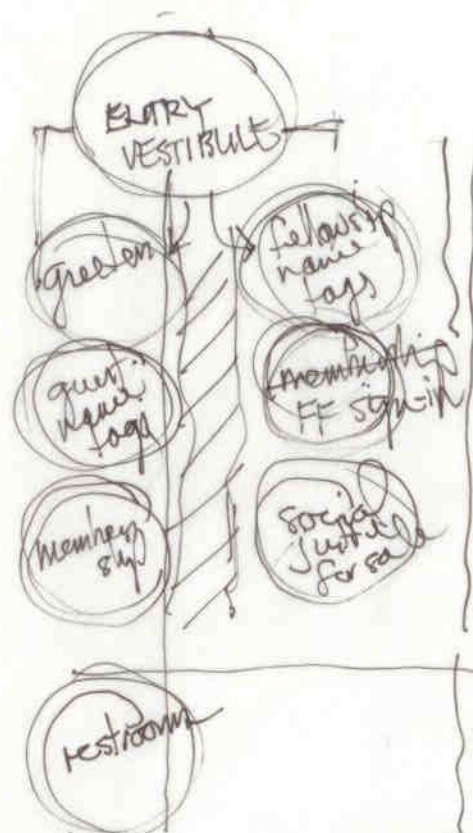
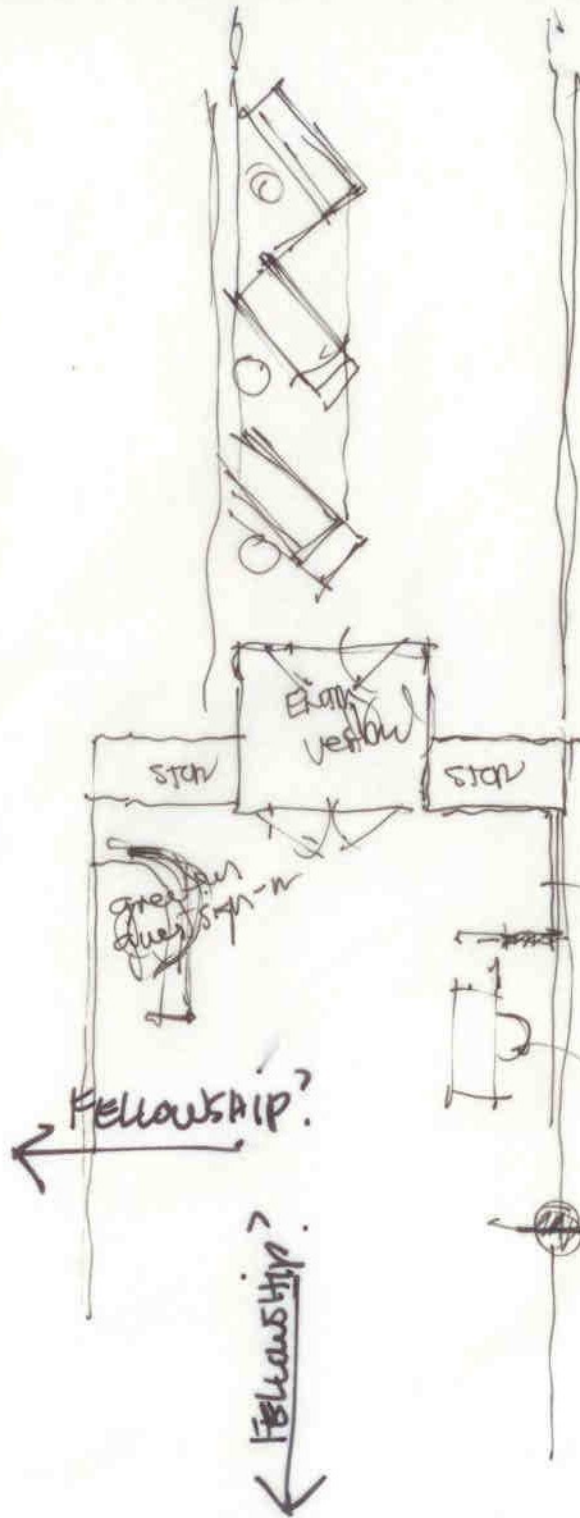
air lock



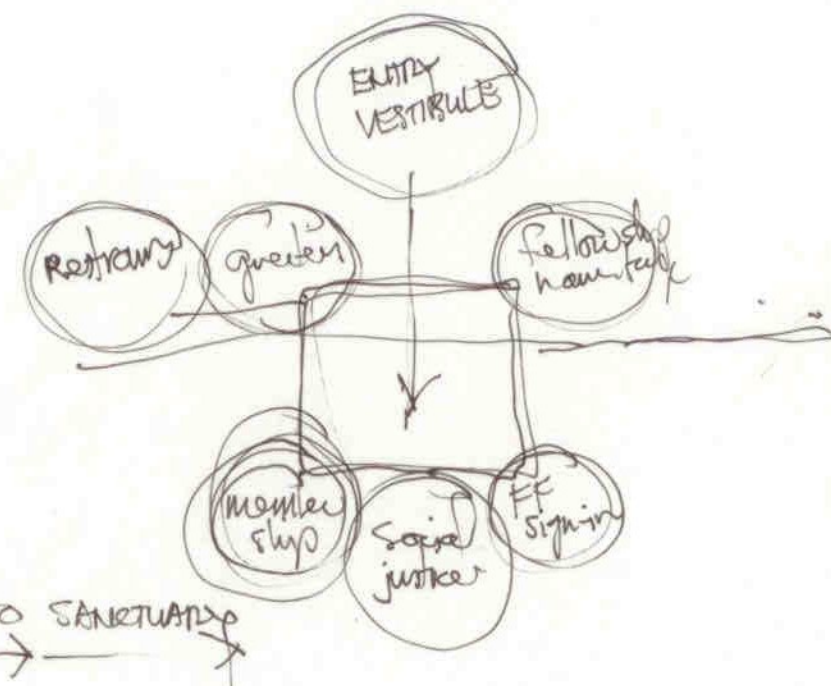
NOT NECESSARILY CONSIDERED



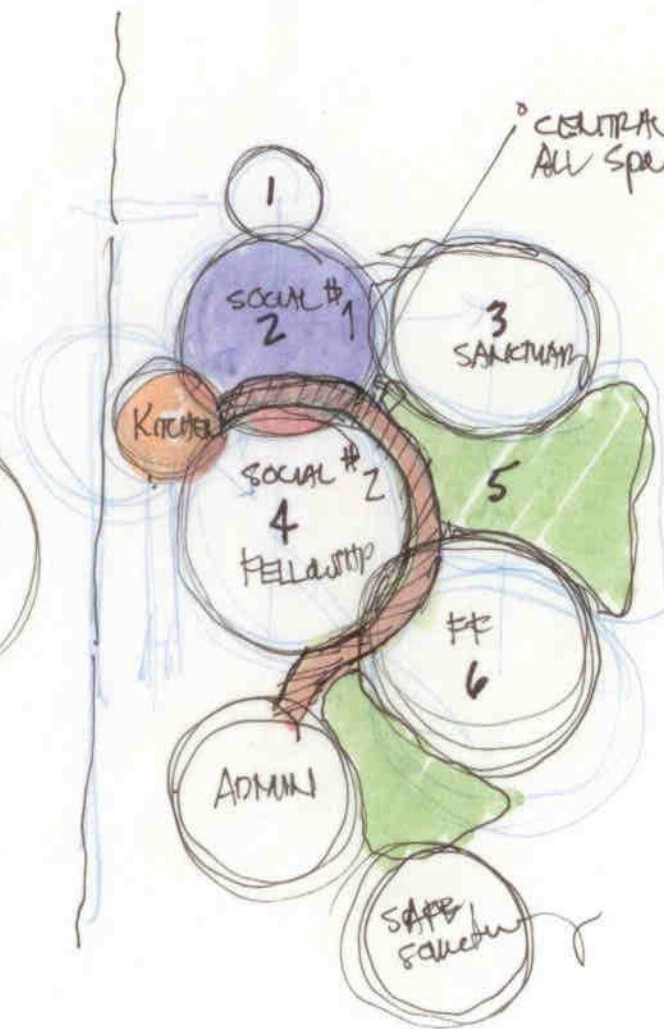
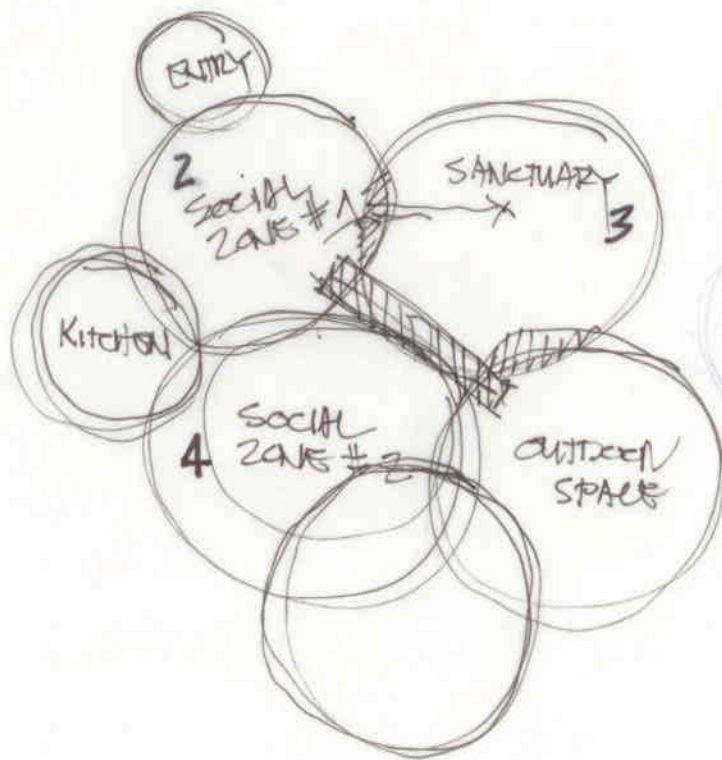
12



SOCIAL ZONE #1



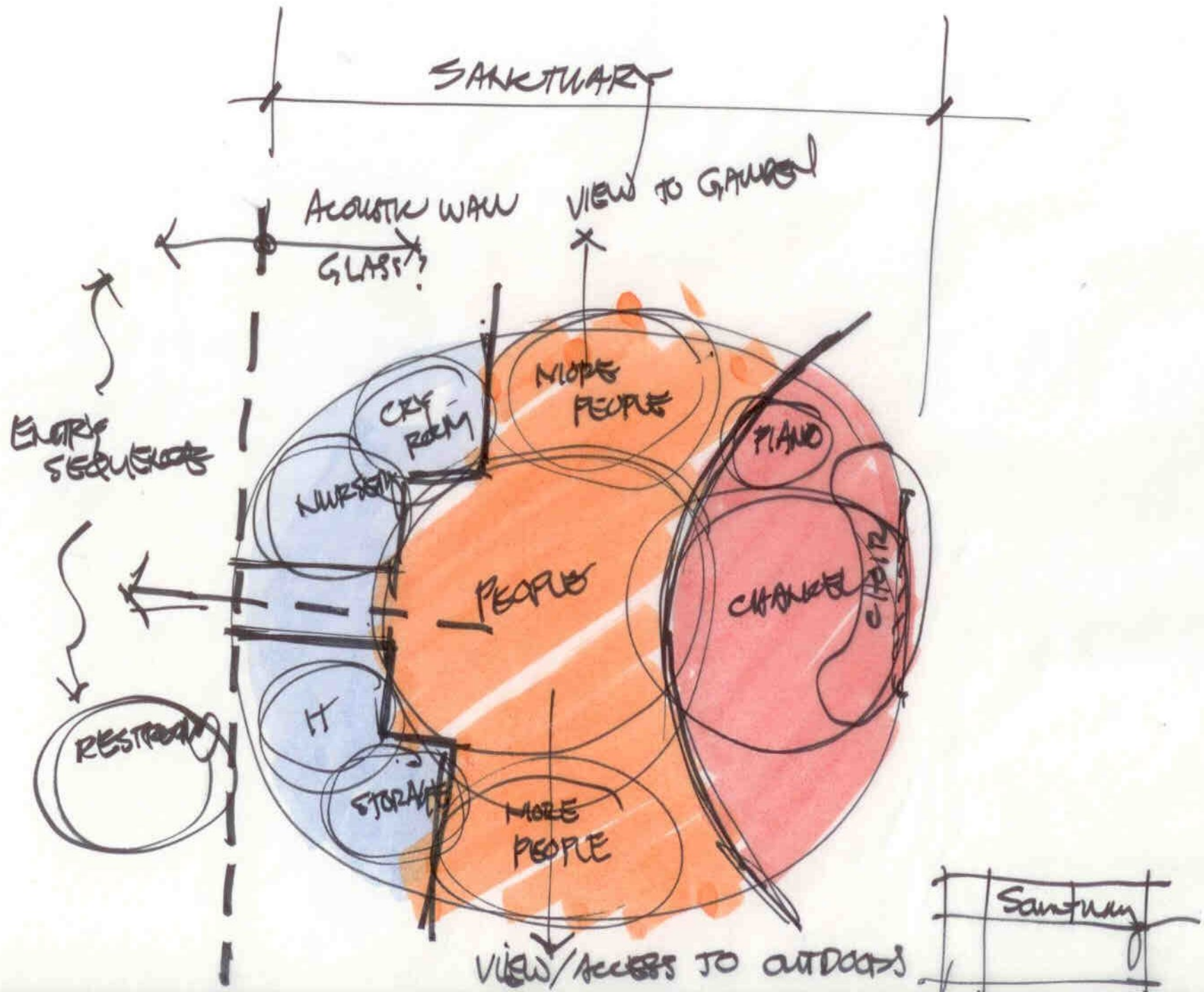
Fellowship



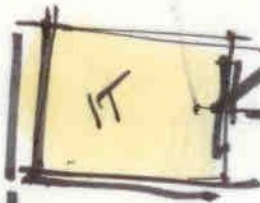
• CENTRAL CIRCULATION TO LINK ALL SPACES

- INTERIOR/OUTDOOR flow from
 - : sanctuary
 - : FF area
 - : Fellowship
 - coffee in or outdoor
- circle dining to expand outside

| | |
|--|------------|
| | Fellowship |
| | |
| | |



ENTRY
ACTIVITY
SOCIAL



PIANO

FLAME

CHOIR
DIRECTION

CHOIR



SANCTION